

# ROCATEX

## CLEANING & PROTECTING - TERRACOTTA FLOOR TILES - NATURAL & SATIN FINISH - June 2024

### CLEANING & SEALING GUIDE FOR TERRACOTTA TILES – SATIN FINISH

The following is a cleaning and sealing guide for terracotta floor tiles to achieve a lighter finish. The products and methods specified should help to ensure that the tiles are suitably conditioned before sealing. Future cleaning and aftercare then made easier following the application of a suitable protective seal and advice on cleaning products to use thereafter for the ongoing aftercare.



### CLEANING....

#### 1. CONDITIONING CLEAN BEFORE SEALING

#### ROCATEX TILE & STONE RENOVATOR

A high performance cleaning product for stripping and cleaning of vitrified glazed ceramics, porcelain, travertine, natural stone, sandstone, slate, marble, granite, terracotta, quarry, brick, concrete, external paving, terrazzo and other mineral floors & walls. On larger areas scrubber drier machines can be used

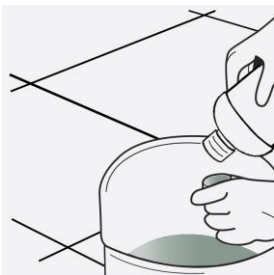


APPLICATION	1 ltr	5 ltr	25 ltr
Mild cases	25 M² Per Bottle	125 M² Per Bottle	N/A
Severe cases	15 M² Per Bottle	75 M² Per Bottle	N/A
Extremely severe	5 M² Per Bottle	25 M² Per Bottle	N/A

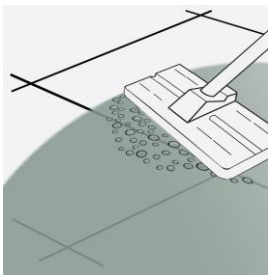
#### TECHNICAL FEATURES

- High performance
- Rapid action
- Interior & exterior
- Dirt and grime remover
- Dilute or ready to use
- Sealer & wax remover
- Walls & floors

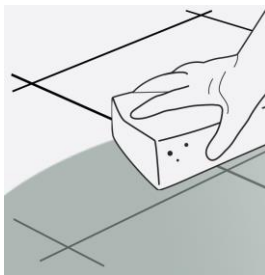
#### DIRECTIONS FOR USE:



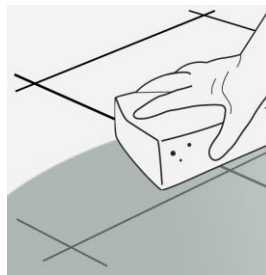
**STEP 1.**  
Dilute solution 1 : 5 with cool water and apply to the surface up to the joints. Try not to overlap onto tiles.



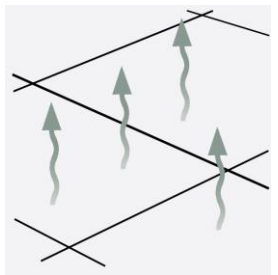
**STEP 2.**  
Agitate immediately using a white emulsifying pad. Keep off of surfaces that are not to be cleaned.



**STEP 3.**  
Extract immediately after scrubbing using cold water and a sponge.



**STEP 4.**  
Change rinsing water and rinse again.



**STEP 5.**  
Allow surfaces to dry before continuing with the next step.

## ROCATEX

Rocatex Ltd  
3+4 Camwal Park  
Camwal Road  
Harrogate, HG1 4PT

T: +44 (0)1423 882 990  
F: +44 (0)1423 299 040  
E: [info@rocatex.com](mailto:info@rocatex.com)  
[www.rocatex.com](http://www.rocatex.com)

This information is offered without guarantee. Our Company policy is one of continuous research and development, we therefore reserve the right to update this information at any time without prior notice. We guarantee the consistent high quality of our products, however, as we have no control over site conditions or the execution of the work, we accept no liability for any loss or damage which may arise as a result thereof. If in doubt, conduct a small test or obtain further technical advice.

# ROCATEX

## FURTHER INFORMATION - CLEANING:

After applying the cleaning solution agitate the surface immediately, then use the sponge for immediate extraction. This will prevent any released residues from re-absorbing into the surface and greatly reduce the drying time of surfaces.

Try to work in manageable areas at a time and make sure to rinse well with plenty of water after each application. Rinsing should be repeated at least 2 times after cleaning. In areas where the staining is deep repeat the process until all of the stains have gone.

**USEFUL EQUIPMENT:** White emulsifying pad, bucket, sponge, absorbant towels (for spillage control), Plastic film and masking tape for covering and protecting any surfaces not to be cleaned.

Ensure that any sensitive surfaces not to be cleaned are properly covered and protected before beginning. Ensure that gloves and eye protection and suitable clothing are worn. If potable water is used for rinsing we would suggest changing the water after every 2 M<sup>2</sup>.

## SEALING....

### 2. PROTECTING THE TERRACOTTA AFTER CLEANING

#### ROCATEX C-10 ULTIMATE SEALER



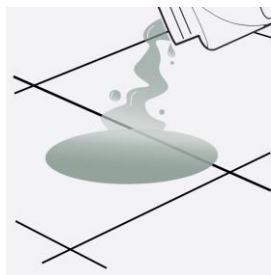
A natural finish water based impregnating sealer. Minimal change to surface character. Helps protect against staining. The treated surfaces strongly repel water, oil and grease. This product allows surfaces to breathe. Ideal for protecting porous surfaces that do not have a damp proof course. This product is non film forming. Suitable for polished and un-polished surfaces.

APPLICATION	1 ltr	5 ltr	25 ltr
Low porosity surfaces	15 M <sup>2</sup> Per coat	75 M <sup>2</sup> Per coat	N/A
Higher porosity surfaces	7.5 M <sup>2</sup> Per coat	37.5 M <sup>2</sup> Per coat	N/A
Polished surfaces	30 M <sup>2</sup> Per coat	150 M <sup>2</sup> Per coat	N/A

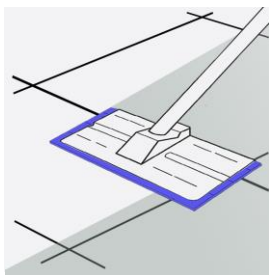
#### TECHNICAL FEATURES

- Non hazardous
- High performance
- Low odour VOC free
- Natural finish
- Easy to apply
- Improved stain resistance
- Interior & exterior use
- Invisible protection
- Quick drying

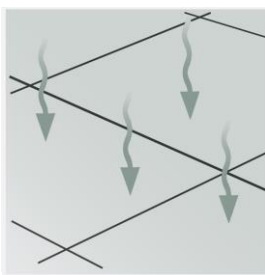
## DIRECTIONS FOR USE:



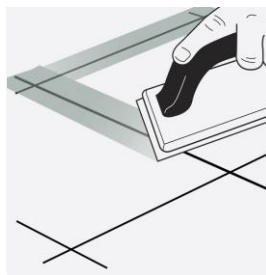
**STEP 1.**  
Ensure surface to be treated is clean and as dry as possible before pouring the sealer onto the surface.



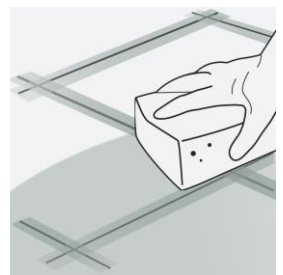
**STEP 2.**  
Spread out evenly using a sealant applicator pad.



**STEP 3.**  
Allow sealer to absorb and dry for 2 hours. Place a little water on the surface to see if it is absorbed. Repeat application until the tile is fully saturated.



**STEP 4.**  
Grout in the joints.



**STEP 5.**  
Sponge and clean off the grout residues and leave to dry.

## FURTHER INFORMATION - SEALING:

Ensure that any surfaces not to be treated are properly covered and protected before beginning. When applying ensure that gloves and eye protection are worn at all times. Some areas may look patchy following application, especially if the sealer is applied to surfaces that are still slightly damp. This is caused by retained moisture. This is normal. The sealer is breathable, so any damp patches caused by retained moisture should still dry to leave surfaces with an even appearance. This can sometimes take a further couple of days following application.

## ROCATEX

Rocatex Ltd  
3+4 Camwal Park  
Camwal Road  
Harrogate, HG1 4PT

T: +44 (0)1423 882 990  
F: +44 (0)1423 299 040  
E: [info@rocatex.com](mailto:info@rocatex.com)  
[www.rocatex.com](http://www.rocatex.com)

This information is offered without guarantee. Our Company policy is one of continuous research and development, we therefore reserve the right to update this information at any time without prior notice. We guarantee the consistent high quality of our products, however, as we have no control over site conditions or the execution of the work, we accept no liability for any loss or damage which may arise as a result thereof. If in doubt, conduct a small test or obtain further technical advice.

# ROCATEX

## FINISHING....

### 3. FINISHING THE SURFACE AFTER SEALING (EXTRA PROTECTION FOR HEAVILY TRAFFICKED AREAS)....

#### ROCATEX SATINWAX FINISH SEALER

A water based wax for interior use. Ideal for both finishing and aftercare. Enhances the appearance and further protects surfaces that are impregnated with ROCATEX C10 Ultimate Stone Sealer or ROCATEX Colour Enhancing or Natural Finish Sealer. Perfect for all types of unpolished natural and artificial stone, encaustics, decorative concrete toppings, vitrified quarry tiles and terracotta.

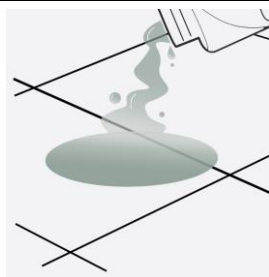


APPLICATION	1 ltr	5 ltr	25 ltr
Smooth & Honed	Up to 30 M <sup>2</sup>	Up to 150 M <sup>2</sup>	N/A
Textured & Riven	Up to 20 M <sup>2</sup>	Up to 100 M <sup>2</sup>	N/A

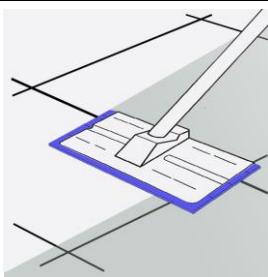
#### TECHNICAL FEATURES

- Non hazardous
- High performance
- Wax Emulsion
- Satin finish
- Easy to apply
- Low odour VOC free
- Interior use
- Finishing and aftercare

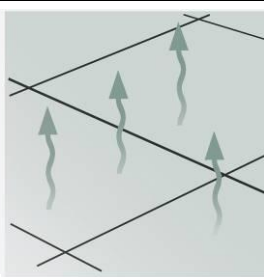
#### DIRECTIONS FOR USE:



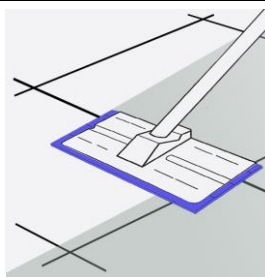
**STEP 1.**  
Ensure surface to be treated is clean and as dry as possible before applying the wax onto the surface.



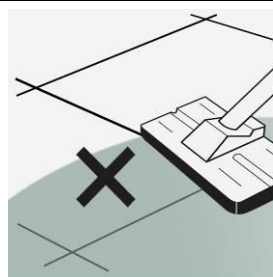
**STEP 2.**  
Spread out evenly using a sealant applicator pad or paint brush making sure to cover the joints as well.



**STEP 3.**  
Allow to dry naturally for 45 minutes. Do not rub the surface.



**STEP 4.**  
Repeat the application until the desired finish has been achieved (max 6).



**STEP 5.**  
Traffic can be allowed a few hours after application. Do not wash, cover or make excessively wet for at least 3 days following treatment.

#### FURTHER INFORMATION - WAX:

For a higher sheen repeat the application of the wax until the desired finish has been achieved (max 6).

For easier aftercare a couple of caps of wax added to a diluted solution of Tile & Stone Cleaner every couple of months will help maintain the satin finish.

## ROCATEX

Rocatex Ltd  
3+4 Camwal Park  
Camwal Road  
Harrogate, HG1 4PT

T: +44 (0)1423 882 990  
F: +44 (0)1423 299 040  
E: [info@rocatex.com](mailto:info@rocatex.com)  
[www.rocatex.com](http://www.rocatex.com)

This information is offered without guarantee. Our Company policy is one of continuous research and development, we therefore reserve the right to update this information at any time without prior notice. We guarantee the consistent high quality of our products, however, as we have no control over site conditions or the execution of the work, we accept no liability for any loss or damage which may arise as a result thereof. If in doubt, conduct a small test or obtain further technical advice.

# ROCATEX

## AFTERCARE....

### 4. DAILY/WEEKLY CLEANING...



#### ROCATEX TILE & STONE CLEANER

A gentle cleaner especially formulated to clean natural stone, porcelain and ceramic without damaging the grout or tile, leaving the floor with a fresh clean fragrance. Suitable for use on sealed, un-sealed, polished and unpolished surfaces. Can also be used in scrubber drier machines if necessary. For more information refer to the technical data sheet.

APPLICATION	1 ltr	5 ltr	25 ltr
20 M <sup>2</sup> surface	40 washes aprox	200 washes aprox	N/A

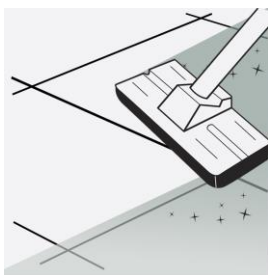
#### TECHNICAL FEATURES

- Environmentally friendly
- PH Neutral
- Phosphate free
- Non film forming
- Commercial & domestic
- Sealed and unsealed surfaces
- Fresh clean fragrance
- Interior & exterior use

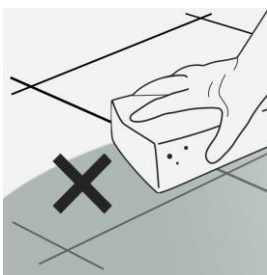
### DIRECTIONS FOR USE - MANUAL APPLICATION



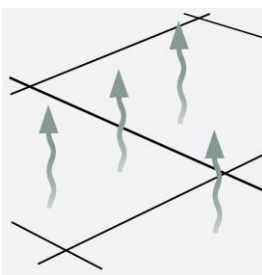
**STEP 1.**  
Dilute 1 capful of cleaner per litre of warm or cool water.



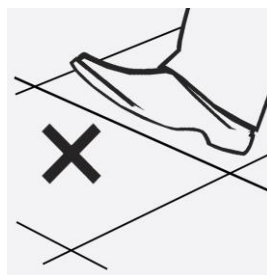
**STEP 2.**  
Mop surfaces. Microfibre or string mops can be used.



**STEP 3.**  
No need to rinse.



**STEP 4.**  
leave surfaces to dry naturally.



**STEP 5.**  
Keep off of surfaces until they are completely dry.

### FURTHER INFORMATION - AFTERCARE:

Always follow detailed instructions on the product labels.

Avoid using steam cleaners and strong alkali or acid based cleaning detergents on natural stone surfaces, as they can compromise protection offered by the sealers and waxes. Also, If grout protection has been applied then this can also be compromised. Many ordinary detergents can dry on the surface after cleaning and gradually build up a slight residue. When this residue is made wet it can be very slippery.

Cleaning surfaces routinely with a PH neutral cleaner should ensure that surfaces remain clean and free of any slippery residues.

Neglected or grubby looking surfaces can be restored by intensively cleaning using ROCATEX Intensive Cleaner.

Heavier traffic levels and commercial floor areas subjected to hard footwear may require periodic intensive cleaning using ROCATEX Intensive Cleaner. In which case a top up coat of protection should be applied.

## ROCATEX

Rocatex Ltd  
3+4 Camwal Park  
Camwal Road  
Harrogate, HG1 4PT

T: +44 (0)1423 882 990  
F: +44 (0)1423 299 040  
E: [info@rocatex.com](mailto:info@rocatex.com)  
[www.rocatex.com](http://www.rocatex.com)

This information is offered without guarantee. Our Company policy is one of continuous research and development, we therefore reserve the right to update this information at any time without prior notice. We guarantee the consistent high quality of our products, however, as we have no control over site conditions or the execution of the work, we accept no liability for any loss or damage which may arise as a result thereof. If in doubt, conduct a small test or obtain further technical advice.